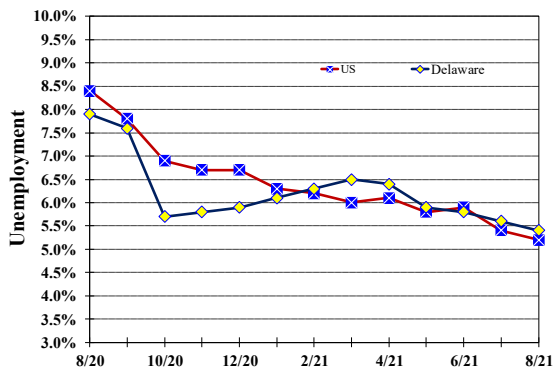


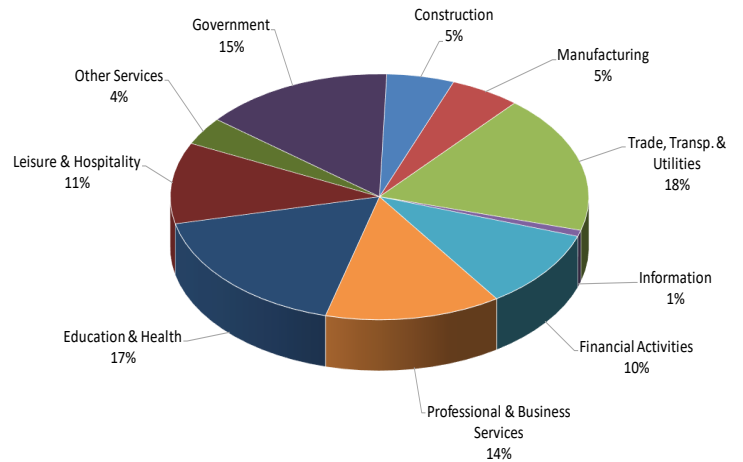
Unemployment Rate

Delaware and US
August 2020 - August 2021



Percent Distribution of Delaware Nonfarm Employment

August 2021



Delaware Civilian Labor Force

Delaware Residents

	Aug. 2021	July 2021	Aug. 2020
Civilian Labor Force	489,000	489,100	490,200
Employed	462,600	461,900	451,600
Unemployed	26,400	27,200	38,600
Unemployment Rate %	5.4	5.6	7.9
US Unemployment Rate %	5.2	5.4	8.4

Source: Delaware Dept. of Labor in cooperation with the US Dept. of Labor, Bureau of Labor Statistics.

Area Unemployment Rates (%)

	Aug. 2021	July 2021	Aug. 2020
New Castle County	5.5	5.6	7.9
Wilmington	8.3	8.7	12.8
Newark	4.1	4.3	5.8
Kent County	6.3	6.8	8.6
Dover	8.6	9.2	11.9
Sussex County	4.3	4.4	6.4

Note: Area rates are not seasonally adjusted.

Source: Delaware Dept. of Labor in cooperation with the US Dept. of Labor, Bureau of Labor Statistics.

Hours & Earnings

All Employee (Total Private)

	Aug. 2021	July 2021	Aug. 2020
Weekly Earnings	\$951.38	\$943.90	\$945.95
Weekly Hours	33.3	32.9	32.8
Hourly Earnings	\$28.57	\$28.69	\$28.84

Delaware Labor Force Trends

Delaware's seasonally adjusted unemployment rate in August 2021 was 5.4%, down from 5.6% in July 2021. There were 26,400 unemployed Delawareans in August 2021 compared to 38,600 in August 2020. The US unemployment rate was 5.2% in August 2021, down from 5.4% in July 2021. In August 2020, the US unemployment rate was 8.4%, while Delaware's rate was 7.9%.

In August 2021, seasonally adjusted nonfarm employment was 452,500 up from 451,700 in July 2021. Since August 2020, Delaware's total nonfarm jobs have increased by a net gain of 15,700, a rise of 3.6%. Nationally, jobs during that period increased 4.4%.

Delaware Nonfarm Employment

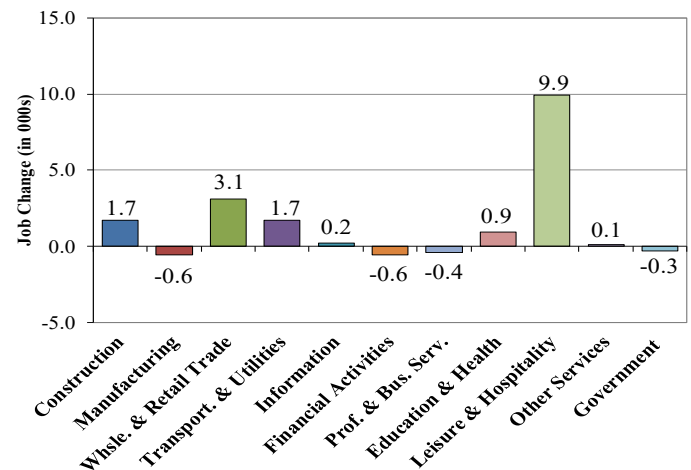
Jobs at Delaware Locations
Seasonally Adjusted (in 000s)

INDUSTRY GROUP	Aug. 2021	July 2021	Over the Month Change	Over the Year Change†
TOTAL NONAG. EMP.	452.5	451.7	0.8	15.7
CONSTRUCTION	23.6	23.3	0.3	1.7
MANUFACTURING	24.5	24.5	0.0	-0.6
Durable Goods	8.8	8.8	0.0	-0.4
Nondurable Goods	15.7	15.7	0.0	-0.2
TRADE, TRANSP., & UTIL.	82.5	83.5	-1.0	4.8
Wholesale Trade	11.2	11.5	-0.3	0.4
Retail Trade	50.6	50.7	-0.1	2.7
Transp. & Utilities	20.7	21.3	-0.6	1.7
INFORMATION	3.7	3.7	0.0	0.2
FINANCIAL ACTIVITIES	46.7	46.6	0.1	-0.6
PROF. & BUS. SERVICES	61.5	61.1	0.4	-0.4
EDUCATION & HEALTH	78.3	78.0	0.3	0.9
LEISURE & HOSPITALITY	48.4	47.6	0.8	9.9
OTHER SERVICES	16.6	16.7	-0.1	0.1
GOVERNMENT	66.7	66.7	0.0	-0.3
Federal Government	5.9	5.9	0.0	-0.9
State Government	32.5	32.3	0.2	-0.4
Local Government	28.3	28.5	-0.2	1.0

† Annual changes are not seasonally adjusted.
Details may not add up due to rounding and seasonal adjustment.
Source: US Department of Labor, Bureau of Labor Statistics.

Delaware Over-the-Year Job Change

August 2020 — August 2021



Consumer Price Index

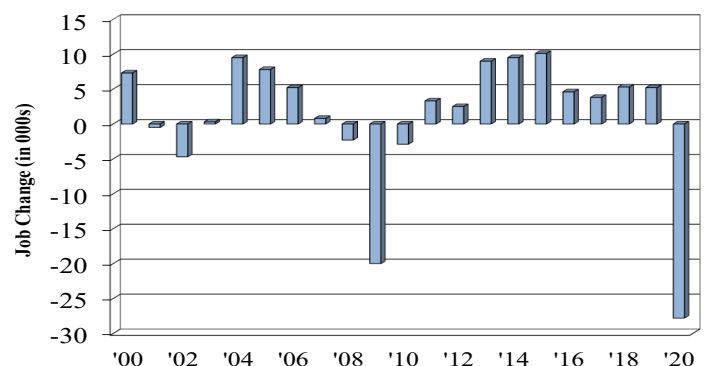
All Urban Consumers

	Percent Change to Aug. 2021 from:		
	Aug. 2020	June 2021	July 2021
US City Average	5.3	0.7	0.2
Phila.-Camden-Wilm.*	4.6	0.6	NA

* Data are published on a bi-monthly basis.

Delaware Annual Net Job Change

Annual Average 2000—2020



Office of Occupational and Labor Market Information

For data questions, contact Tom Dougherty (302) 761-8062

<https://labor.delaware.gov/divisions/oolmi/>